

# Restoring the traditional Mediterranean diet through the conservation of wild edible plants



Tiziana Ulian<sup>1</sup> and Nizar Hani<sup>2</sup>

With contributions from **Khaled Abulaila<sup>3</sup>, Efisio Mattana<sup>1</sup>, Melanie-Jayne Howes<sup>1</sup>, Pablo Gómez-Barreiro<sup>1</sup>, Michiel van Slageren<sup>1</sup>, Elinor Breman<sup>1</sup>, Udayangani Liu<sup>1</sup>, Tiziana Cossu<sup>1</sup>, Joelle Breidy<sup>4</sup>, Santiago Vilanova<sup>5</sup>, Samuel Pironon<sup>1</sup> and Ian Ondo<sup>1</sup>**

<sup>1</sup>Royal Botanic Gardens, Kew (UK)

<sup>2</sup>Shouf Biosphere Reserve (Lebanon)

<sup>3</sup>National Agricultural Research Center (Jordan)

<sup>4</sup>Lebanese Agricultural Research Institute (Lebanon)

<sup>5</sup>Centro de Conservación y Mejora de la Agrodiversidad Valenciana (Spain)



UNIVERSITAT POLITÈCNICA  
DE VALÈNCIA

# Kew's Millennium Seed Bank Partnership

> 39.000 wild species banked  
(> 2.2 billion seeds)



MILLENNIUM  
SEED BANK  
PARTNERSHIP  
**Kew**





# Kew's Millennium Seed Bank Partnership - Jordan & Lebanon

## 1. Toward conserving Jordanian Flora

*Aim: To enhance ex situ conservation and sustainable utilization of plant species indigenous to Jordan*

## 2. Conservation of Lebanese flora

*Aim: Complementing existing in situ conservation in Lebanon by supporting the collection, study and ex situ conservation of Lebanese flora.*

2,553 accessions (1,626 taxa) conserved

- Jordan: 662 taxa
- Lebanon: 964 taxa
- 40% wild edible plants



# Restoring the traditional Mediterranean diet through the conservation of wild edible plants



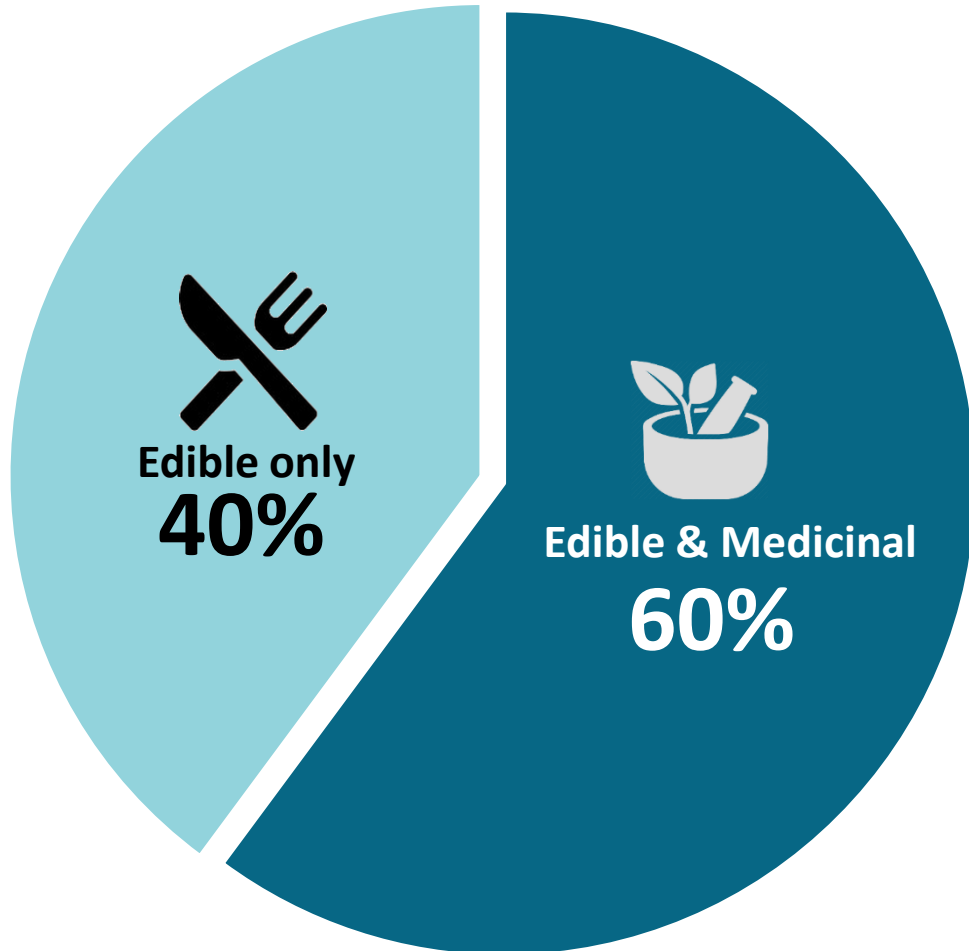
*Aim: To promote the sustainable use of the traditional Eastern Mediterranean (EM) diet through the preservation of traditional knowledge and science-based conservation and cultivation activities of wild edible plants in Jordan and Lebanon.*

## Main Outputs:

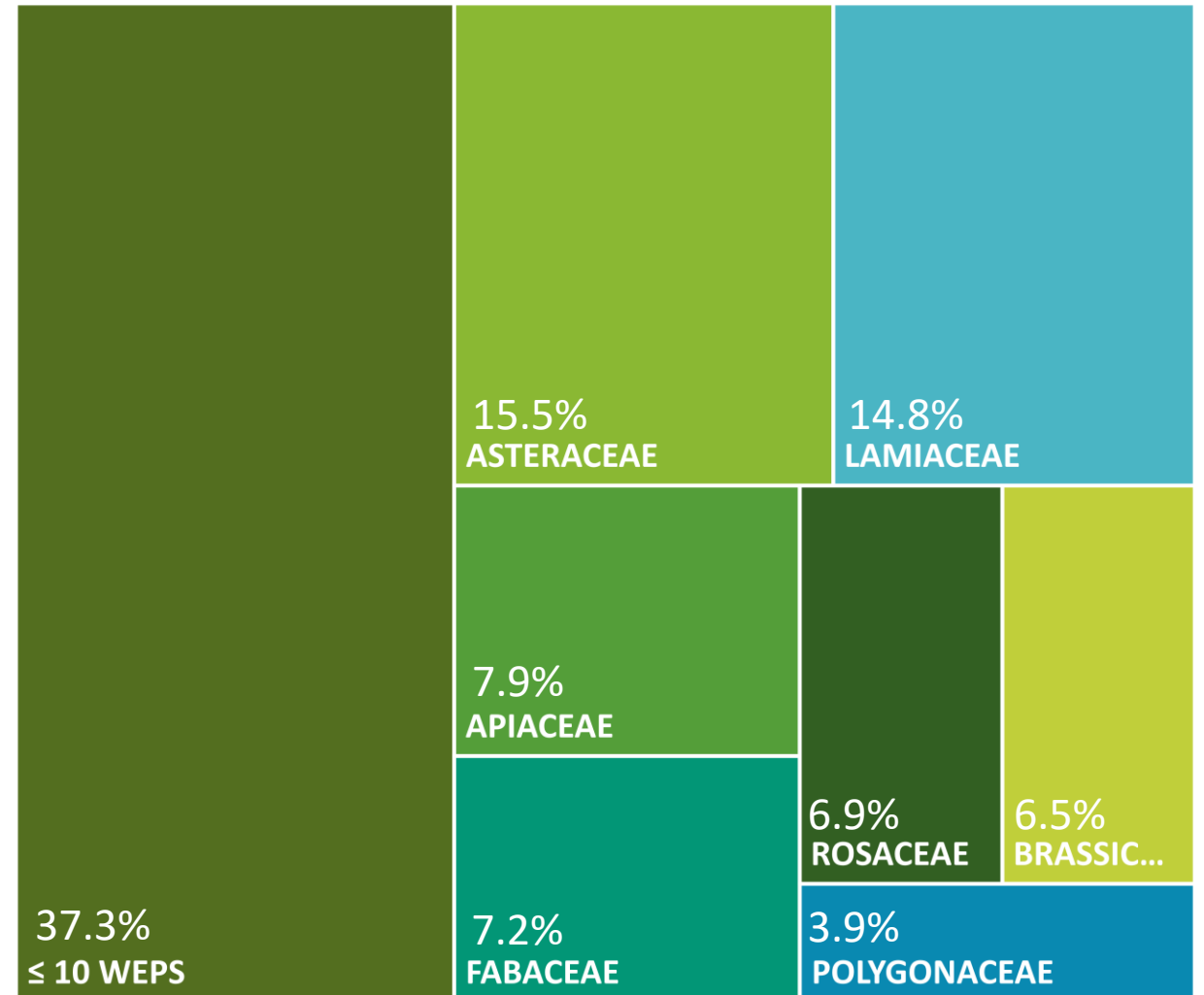
1. Preservation of the ethnobotanical knowledge on EM wild edible plants
2. Conservation of EM wild edible plants
3. Research to support the conservation and sustainable use of EM diet plants
4. Value adding and promotion of sustainably sourced plant food products of the EM diet

# Preliminary Results

Total Wild Edible Plants: 277 species



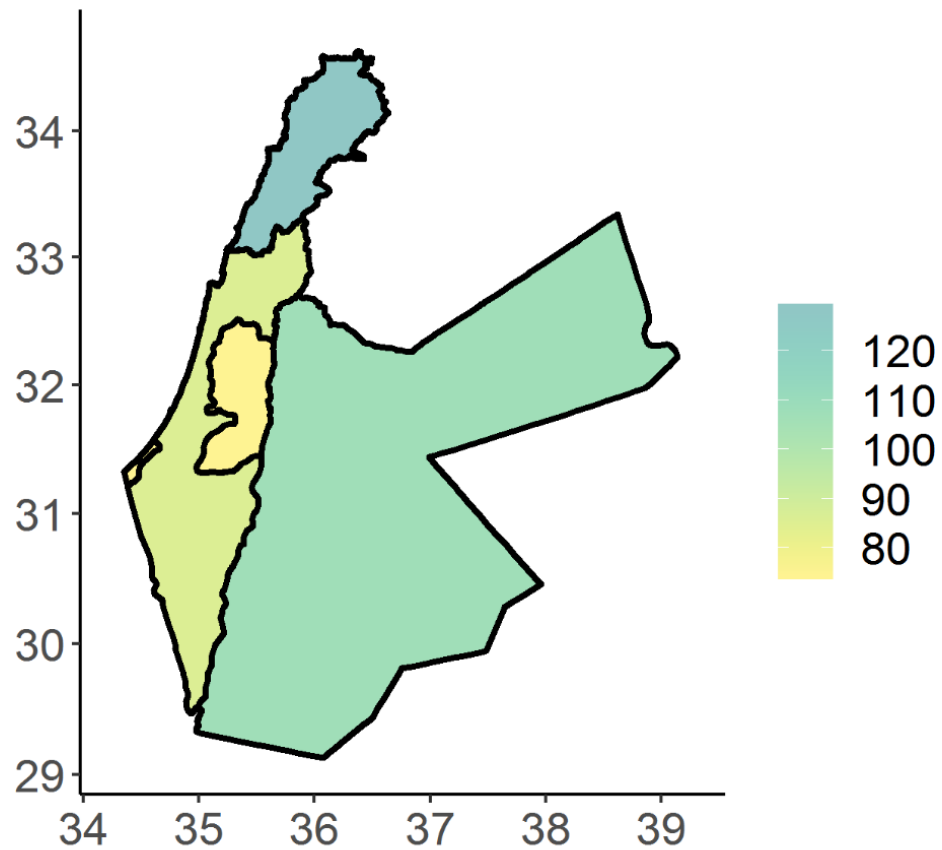
Families Distribution



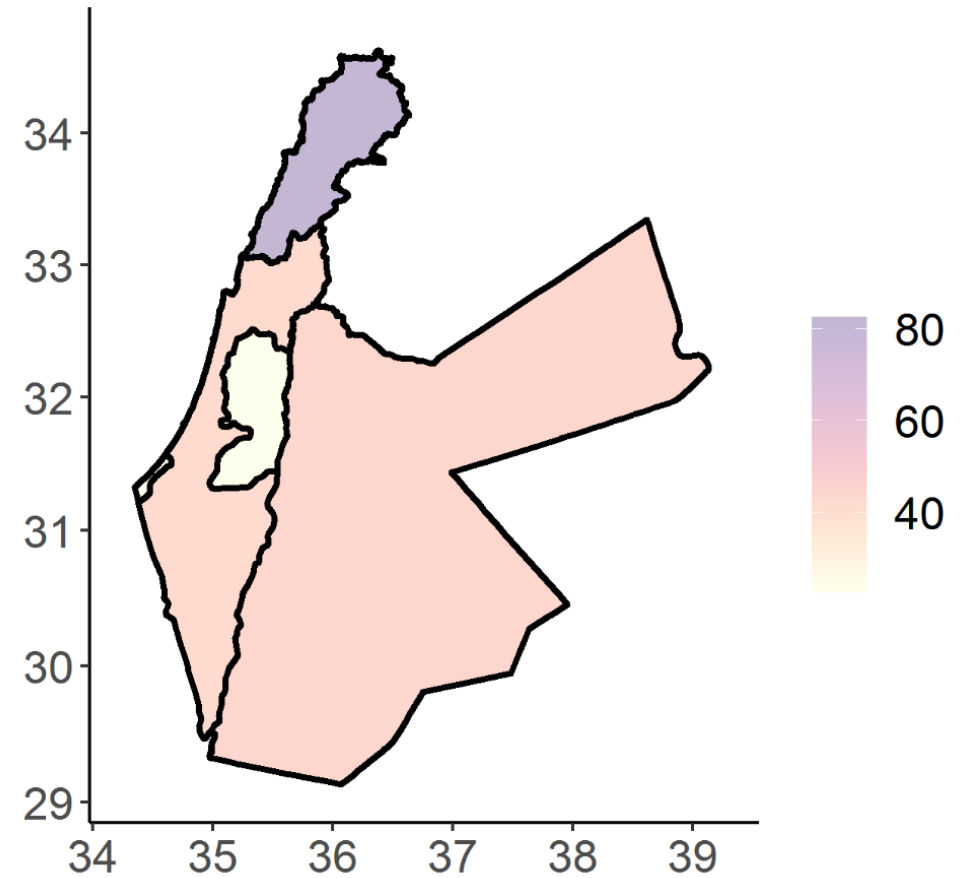


# Preliminary Results

Total Wild Edible Plants: 277 species



Found in only one country



*Gundelia tournefortii*



*Salvia hierosolymitana*





# Sustainable Use

Surveying and collecting plants of *G. tournefortii* across populations in Jordan in March 2019 for chemical and genetical analysis





# Shouf Biosphere Reserve



- Established in 1996 and Green listed in 2018
- 50,000 hectares of surface, which make SBR one of the largest protected areas in the Middle East and the East Mediterranean (covers 5% of the Lebanese territory)
- Designated as a UNESCO Man and Biosphere Reserve in 2005
- SBR is managed by MOE / Local committee / Management team



# Income Generation

- Eco-tourism activities
- Rural products (handicraft & processing food)
- Compost
- Briquettes





**Forest  
Landscape  
Restoration**

1950 m

1

**1- Top of the Mountain  
1800-1950 m**

2

**2- Cedar Forests  
1200-1800 m**

1500 m

3

**3- Pine and Oak Forests  
900 -1200 m**

1200 m

4

**4- Range /Grazing Land  
800 – 1300 m**

1000m

5

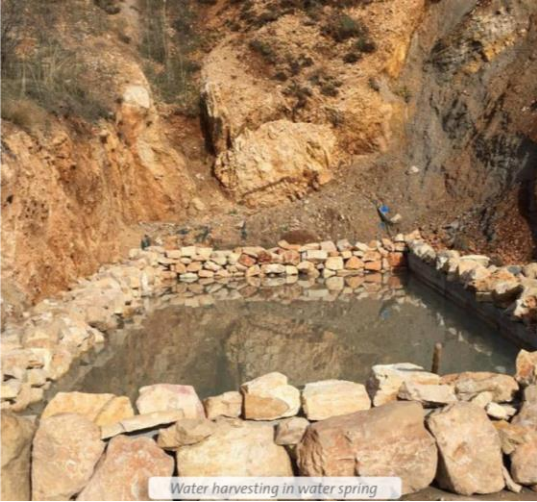
**5- Agriculture / Terraces  
900 – 1100 m**

800m

6

**6- Villages / Water  
800 -1200 m**

# Terraces



SHOUF BIOSPHERE RESERVE  
محمية الشوف المحيط الحيوي

- Restoration of Historical Agricultural Terraces - Assessment, Cost-Benefit Analysis and Marketing in Shouf Biosphere Reserve and Qadisha Valley
- Stonewall Terrace Restoration Guidelines
- Road Map towards Sustainable Agriculture
- Market Analysis / Value chain

200 hectares to be restored

27 hectares on going, using native species with high economic value





# Terraces



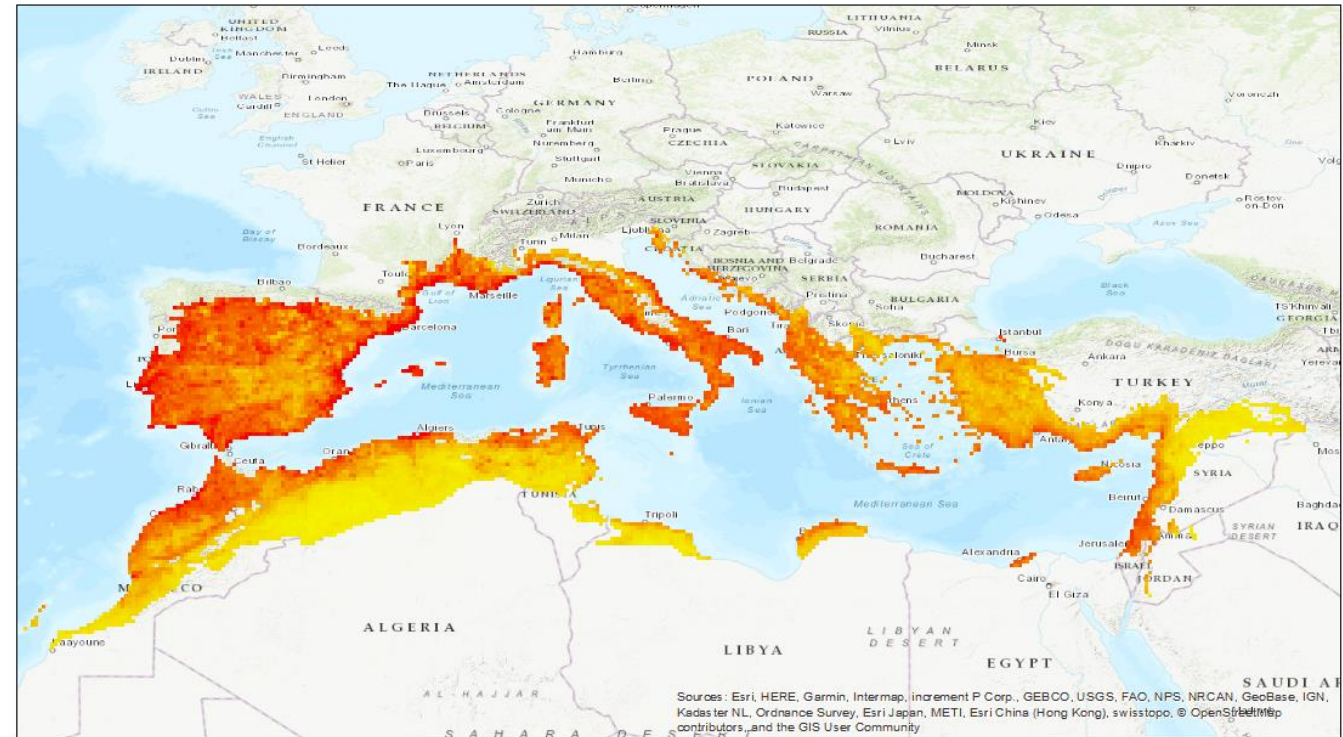
- Restoration of Historical Agricultural Terraces - Assessment, Cost-Benefit Analysis and Marketing in Shouf Biosphere Reserve and Qadisha Valley
- Stonewall Terrace Restoration Guidelines
- Road Map towards Sustainable Agriculture
- Market Analysis / Value chain

200 hectares to be restored

27 hectares on going, using native species with high economic value

# Next Steps

- Surveying and collecting plants of *G. tournefortii* across populations in Lebanon for chemical and genetical analysis
- Seed collecting and conservation in Jordan and Lebanon
  - Research on seed biology and ecology vs climate change
- Expanding work to the Mediterranean basin
- Fundraising



Estimated species richness  
of edible plants







# THANK YOU

---

Tiziana Ulian: [t.ulian@kew.org](mailto:t.ulian@kew.org)  
Nizar Hani: [nizar@shoufcedar.org](mailto:nizar@shoufcedar.org)