

Ministry of agriculture and food : financial axis

- Forest national office : 11,5 M€
- Ministry of agriculture and food : 12 M€

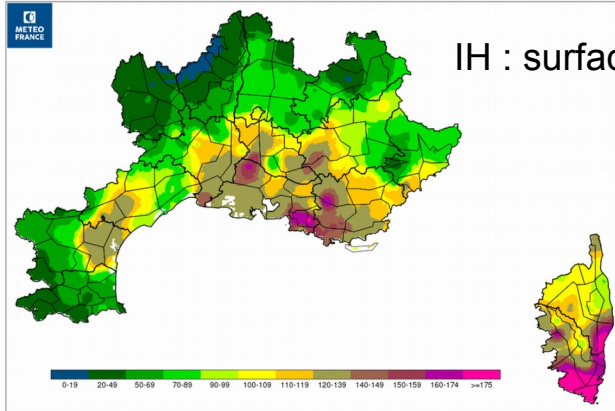
2 geographical areas essentially involved

- SE = 15 mediterranean departments
- SW = Nouvelle Aquitaine region



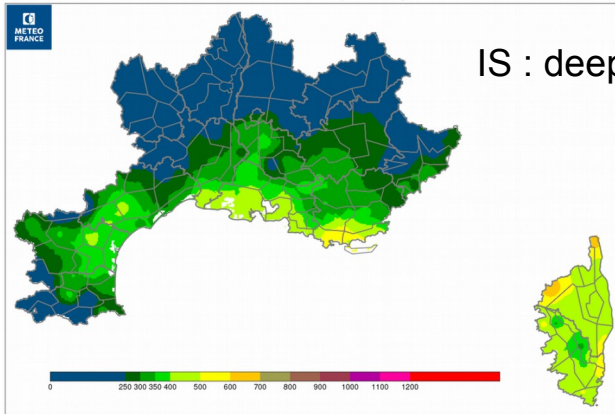
Risk forecasting and causes processing

IH du 15/06/2017 (RR06-06)



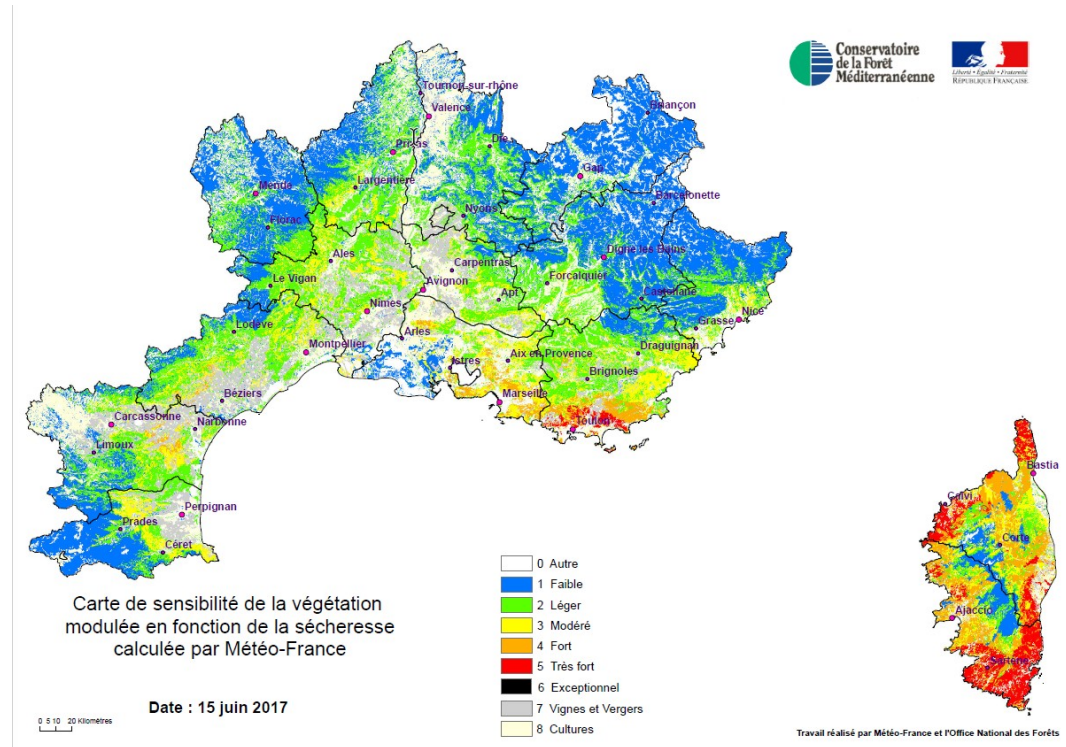
IH : surface desiccation

IS du 15/06/2017 (RR06-06)

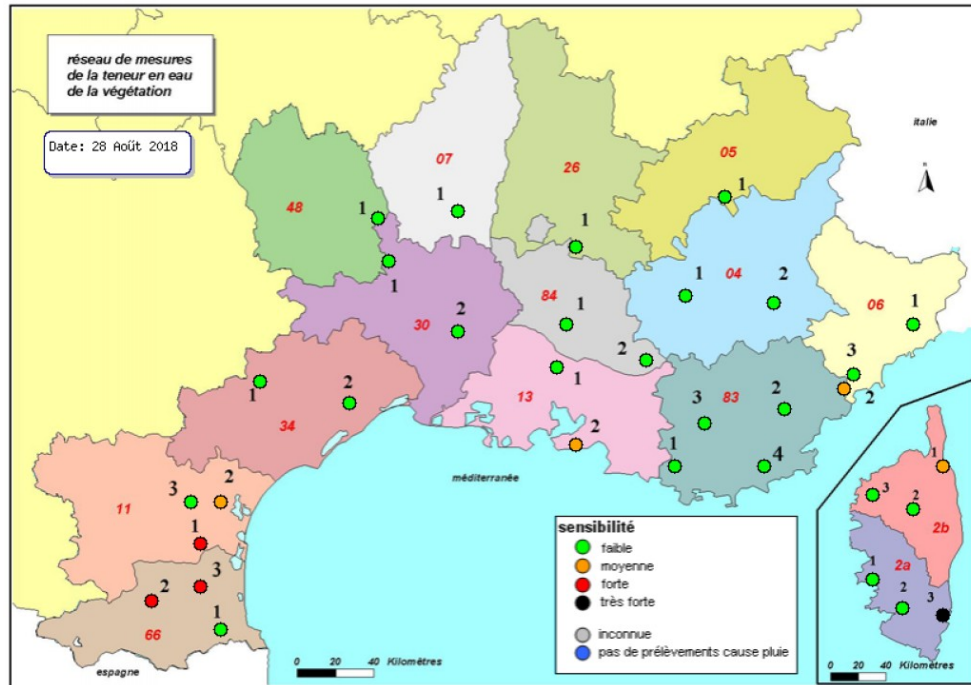


IS : deep desiccation

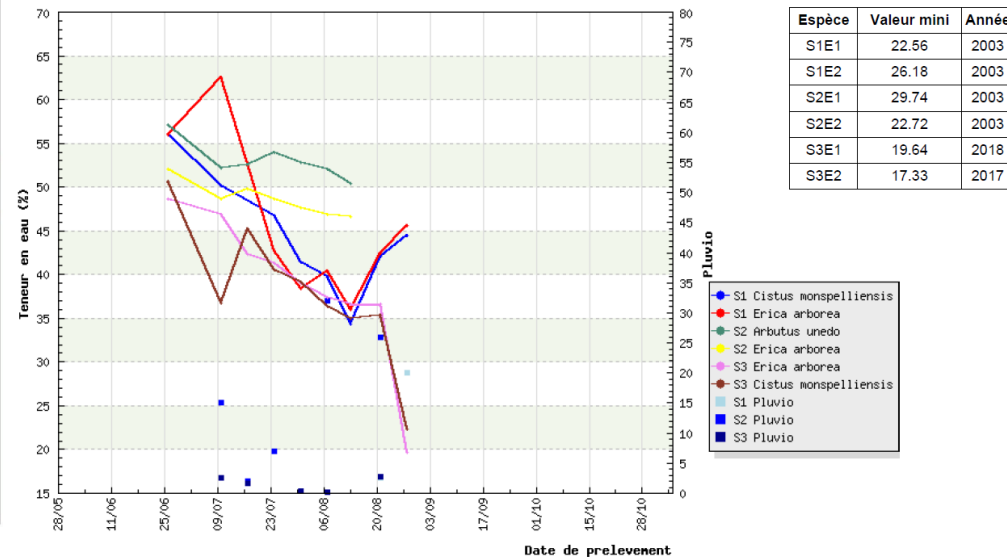
Vegetation sensitivity



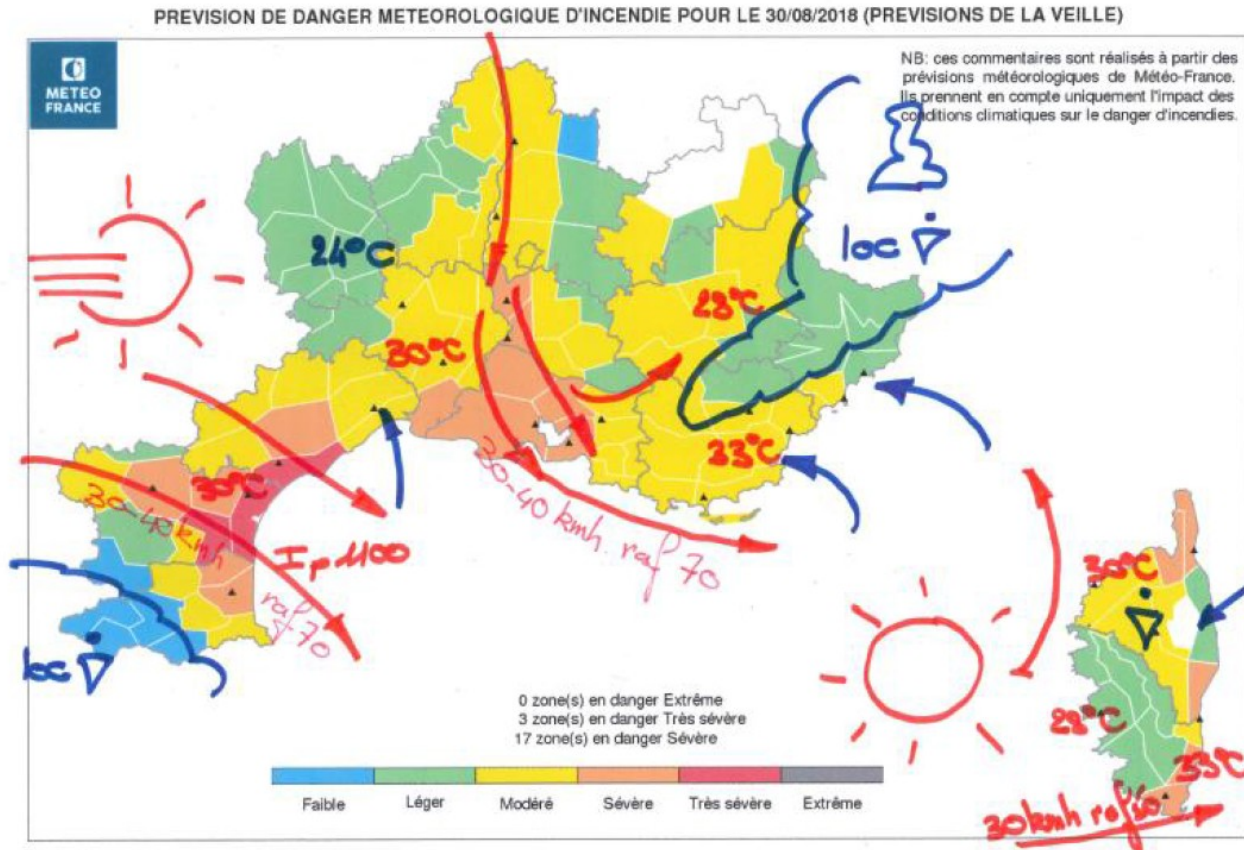
Risk forecasting and causes processing



Plants drought (twice a week in season)



Risk forecasting and causes processing



⇒ pre-positioning of means

Engines and equipments



Engines and equipments



Water supply point



Tracks



Controlled burns



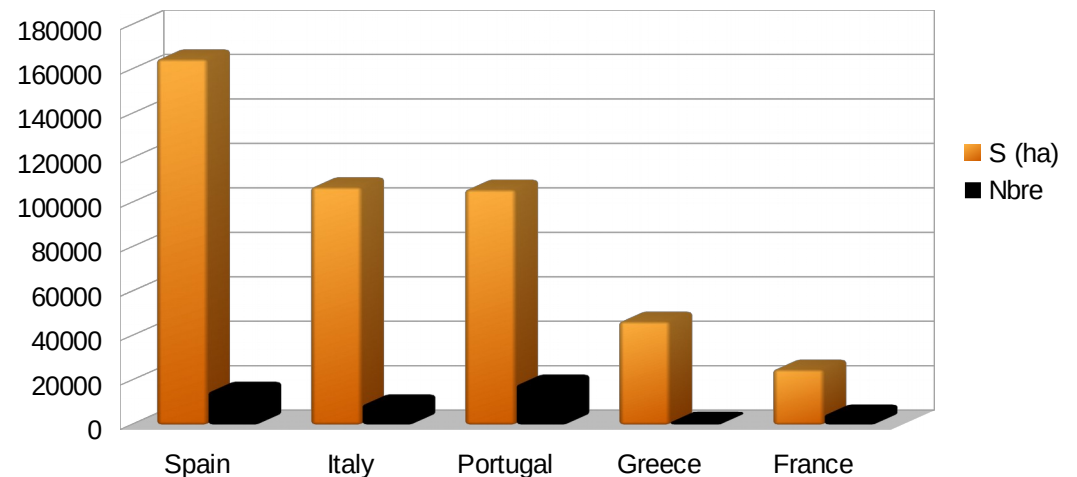
Tanks

Some figures

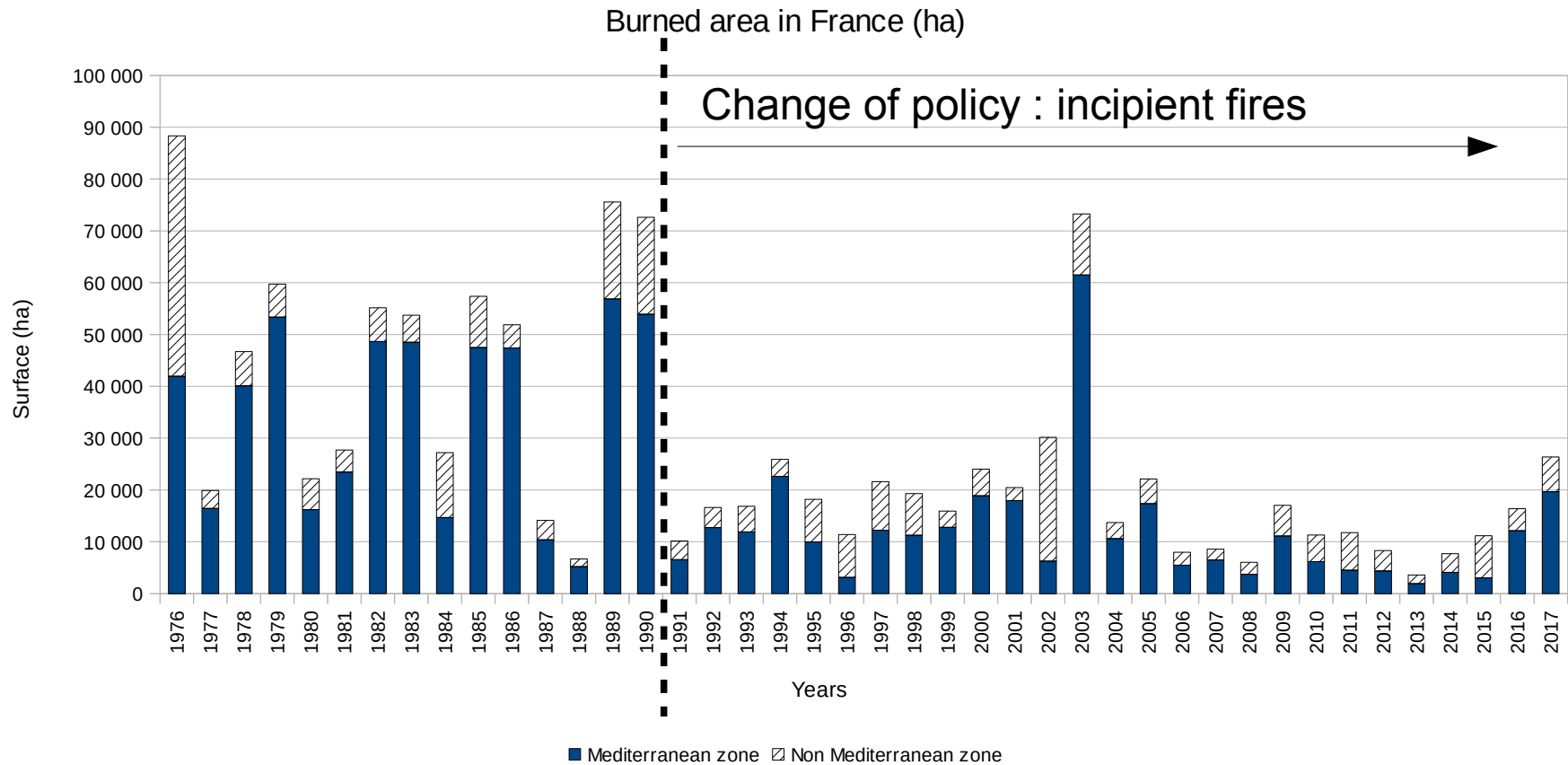
- France
 - ✓ 95% of forest fires are due to human activity
 - ✓ 4 000 forest fires in average each year for circa 20 000 ha
 - ✓ 50 years are necessary for the regeneration of a burned forest
- 5 european countries

Burned area and et number of fires

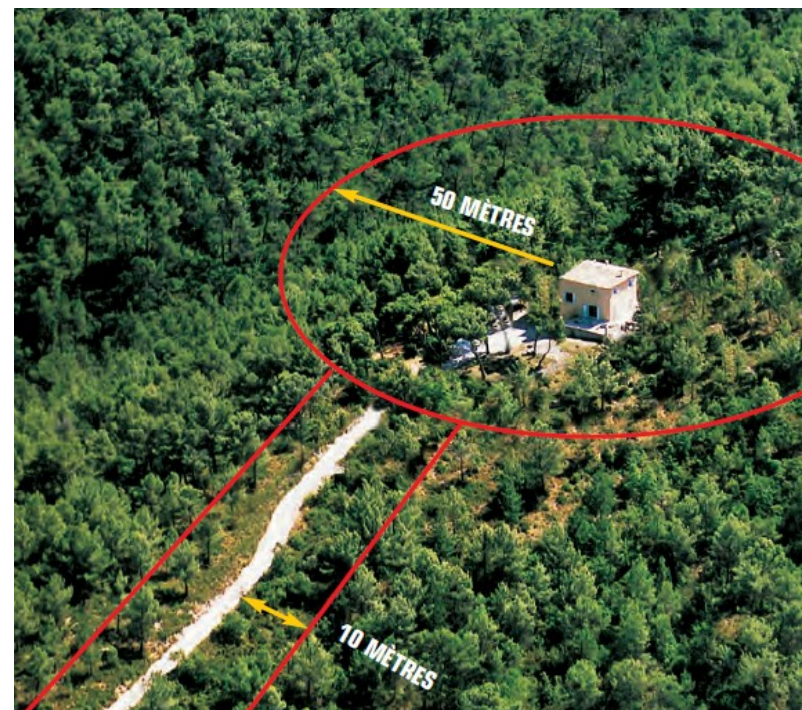
period 1980-2015



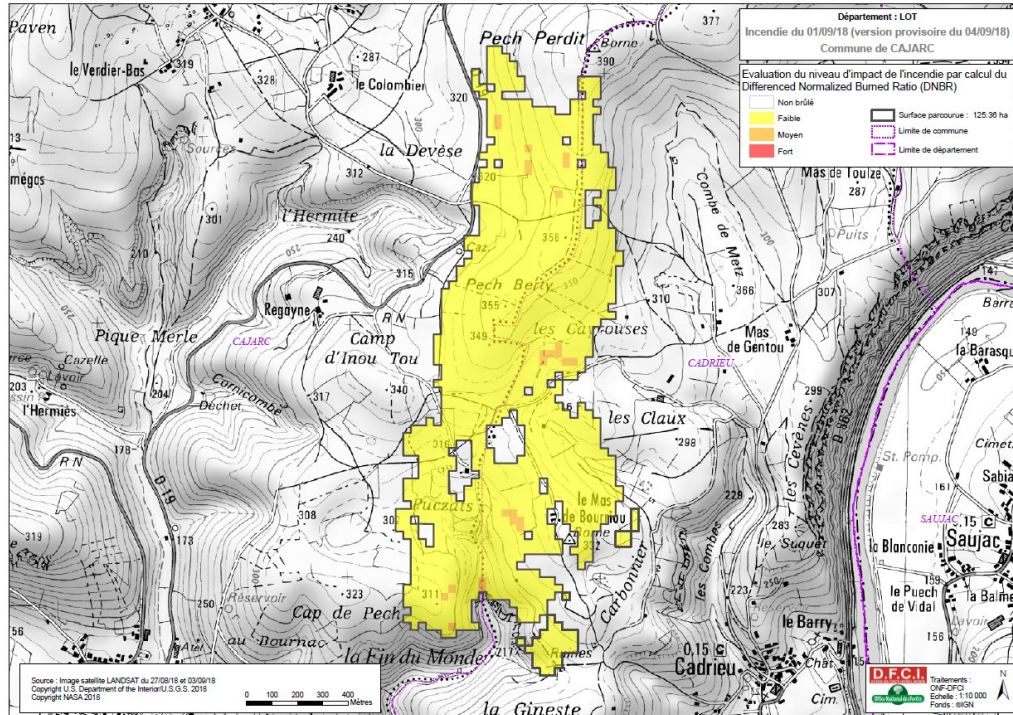
Evolution



Legal obligation of clearing



Cartography of burned areas



Cartographie des incendies de forêts, Zone Défense et de Sécurité Sud

Département : HAUTE-CORSE
Commune de VENACO
Incendie du 30/12/18

