

Mapping the contribution of the Turkish forestry sector to the SDGs



Melike Hemmami, Consultant
UNDP Turkey



Shortly - Turkish National MRV system design

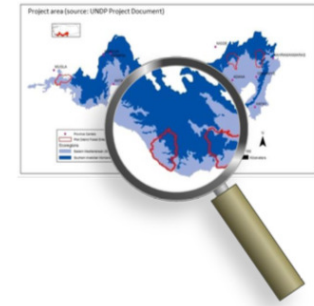


- ▶ establish a quality and content framework for GHG reporting in the Turkish Forestry Sector.
- ▶ assess the current reporting and data environment for forest carbon MRV in Turkish Mediterranean Forests,
- ▶ provide good practice examples and methodologies for carbon quantification and activity impact modelling

REPORT

TURKISH NATIONAL MRV SYSTEM DESIGN

VERSION 1.1



Prepared by
Gold Standard Foundation & TREES Forest Carbon Consulting LLC
June 2017

Gold Standard

TREES*
Forest Carbon Consulting

MRV Goals: Valuable Information for Forest Management and Reporting



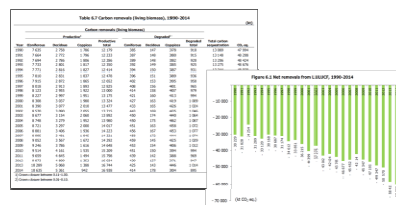
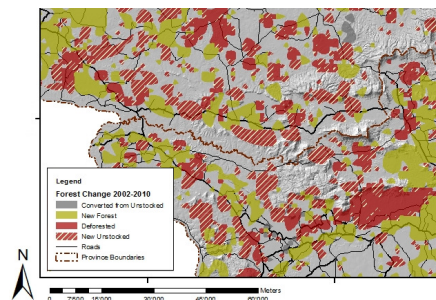
Forestry MRV system

(National) Greenhouse Gas Inventory and Reporting

Forest management strategy & plans

Climate change mitigation and adaptation

Sustainability monitoring



Maps (GIS data)

Communication, publication
Spatial data analysis and modeling
Change visualization (historic or prospective)
Land use management

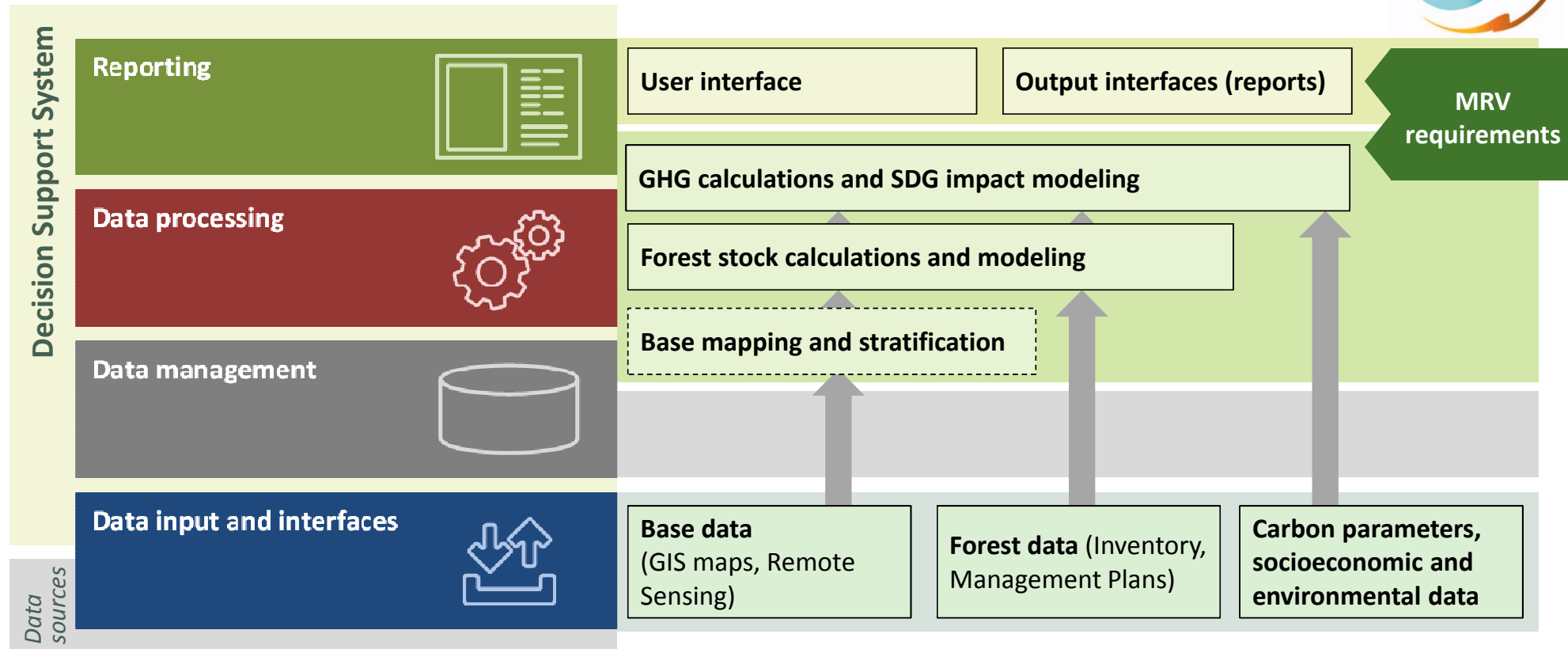
Cockpit report

Policy or management reporting (“at-a-glance reports”)
Scenario impact modeling (comparison of activity options)
Change visualization
Decision support

Data tables

Consolidation into higher-level reports (e.g. UNFCCC reports)
Data analysis, research
Further processing (in other systems)

MRV Architecture: General Setup for Turkey



Sustainable Development Goals	Activity Type						
	A/R		IFM			Conservation	
SDG Goal	Timber Harvest	Conservation	Prevent loss of stocks	Increase stocks	Increase HWP	Conservation	Restoration
SDG 1 - No Poverty							
Instigation or increase of smallholder income from forestry and forest products							
SDG 2 - No Hunger							
Instigation or increase of food productivity from forests							
Contribution to agricultural quality and resilience							
SDG 3 - Good Health							
Instigation or improvement of production of medicinal products							
SDG 4 - Quality Education							
Provision of forestry access, skills, training and education to the public, students and workers							
SDG 5 - Gender Equality							
Provision of quality employment and leadership roles for women							
Enabling womens access to forest benefits							
SDG 6 - Water and Sanitation							
Water filtration - improved water quality and quantity outputs from forested areas							
Contribution to watershed management including water supply, access, flows etc							
Contribution to reducing flood risk and improving resilience to flood events							
Forest impact on stressed water sheds							
SDG 7 - Renewable Energy							
Production of bioenergy and woodfuel materials							
SDG 8 - Good Jobs and Economic Growth							
Domestic timber and other produce enhances domestic economy and improves resilience							
Enhanced quantity and quality of employment in forests and supply chains							
Combat enforced or slave labour and exploitation							



Linkage to SDGs

Created a drive to carry out the work forward (map the contribution of the forestry sector to the SDGs)

This prototype showed that MRV of SDG benefits is possible and we decided to continue

Mapping the contribution of the Turkish forestry sector to the SDGs

(Work in progress)



Why:

- ▶ To understand the contribution of forestry sector in achieving the SDGs
- ▶ Highlight the importance of the sector from an SDG perspective
- ▶ To try out a specific sector process for SDGs.



Mapping the contribution of the Turkish forestry sector to the SDGs

(Work in progress)

Aim:

- ▶ To identify the ecological, social and economic input of and explore how it links to the SDGs
- ▶ Create a discussion paper to consult/enrich with

Who:

- ▶ A multi-disciplinary team
- ▶ Experts on biodiversity, forestry, natural resources economy, sociology, gender, localisation of SDGs and development.



- ▶ Process Planning
- ▶ Linking process
- ▶ Development of indicators
- ▶ Assessment and review process

1. Group (Social)	2. Group (Biodiversity)	3. Group (Economy)	4. Group (Gender)	Cycle/period
SDG 1	SDG 6	SDG 7	SDG 5	Responsible institution (Collecting data)
SDG 2	SDG 13	SDG 8	SDG 10	Related institution (area of operation)
SDG 4	SDG 14	SDG 9		Notes
SDG 11	SDG 15			
SDG 12				



VI MFW
Mediterranean
Forest Week

Principles

the goals that will

able
keholders
ls

6. Based on international consensus

9. Dynamic goals

10. High-quality and consistent measurement

Indicator cards

Suggested Indicator	Number of houses having access to clean water and sewage systems in forest villages
Linked SDG	Goal 6. Ensure availability and sustainable management of water and sanitation for all
Linked target	6.2 By 2030, achieve access to adequate and equitable sanitation and hygiene for all and end open defecation, paying special attention to the needs of women and girls and those in vulnerable situations
Affiliated indicator set	6.2.1 Proportion of population using safely managed sanitation services, including a hand-washing facility with soap and water
Nature/attribute	Qualitative: Quantitative: X
Existing data situation in relation to the indicator	Available (Specify source): Not available: X
What/who should be the data source and/or what should be the data collection strategy ? Please specify?	
Cycle/ period	Once every 5 or 10 years
Responsible institution (Data collection)	TÜİK
Related institution	
Notes	



VI MFW
Mediterranean
Forest Week

Process

► Assessment and review process

Indicator assessment Criteria Definition and level of importance				
SDG	Nu	Criteria	Definition	Importance
SDG 1		1. <u>İlgililik (Relevance)</u> ¹	Hedef ve/veya alt hedef ile <u>ilgili</u> Hedefin ölçmek istediği konu ile uyumluluğu	High
SDG 2		2. <u>Yeterlilik (Efficiency)</u> ²	Ölçmek istenilen hedefi/alt hedef ölçmede etkili olması Göstergeye bakılarak, hedefe ulaşıp ulaşılamadığı söylemenin mümkün olması	High
SDG 3		3. <u>Uygulanabilirlik (Feasibility)</u> ²	İlgili veriye erişim kolay olması ya da uygulamasının zor olmaması Veriye erişim başka koşullara bağlı olmaksızın mümkün olması ya da ölçümlemesi kolay üretilebilir veriye dayanıyor olması	High
SDG 4		4. <u>Basitlik (Simple, Single-variable)</u> ³	Basit ve tekil olması Birbirinden farklı birden fazla şeyi bir arada ölçmeyi hedeflemiyor olması	Medium
SDG 5		5. <u>Ayrıştırılabilirlik (Disintegrated)</u> ³	Toplumsal cinsiyet, yaş, gelir düzeyi, engellilik gibi değişkenlere göre ayrı karşılaştırmalar yapmaya imkân sağlaması	Medium
SDG 6		6. <u>Sonuç odaklılık (Mainly Outcome-focused)</u> ³	Sonuçlara odaklanması, süreçler ile değil sonuçlar ile ilgili olması Araçları, etkinlikleri değil sonuçları izlemeye yönelik olması	Medium
SDG 7			İleride geçerliliğini koruyabilmesi, değişen koşullardan etkilenmemesi Gelecek 15 yıl boyunca aynı şekilde ölçümleyebilmesi	Medium
SDG 8			Uluslararası standartlar ile ya da veri toplama sistemleri ile uyumlu olması Yalnızca uygulanan ülkeye ait özgün özelliklere bağlı olmaması	Low
SDG 9		9. <u>Anlaşılabilirlik (Comprehensibility)</u> ³	Kolay anlaşılabilir olması Farklı kişi / kurum ve uzmanlar tarafından aynı şekilde anlaşılması	Low
SDG 10		10. <u>Özgüllük (Specitivity)</u> ³	Özellikle ilişkilendirildiği hedefi ölçmeye yönelik olması Spesifik olarak ilişkilendirildiği hedefe yönelik türetilmiş olması	Low
SDG 11				
over ors		24 removed		
		43 reformulated		
SDG 16				
Total				



Process

- Assessment and review p

Re-scoring	133 indicators
Re-assessment	58 indicators (scoring less than 3.5 average)
Result of the process	
Reviewed	37 indicators
Removed	21 indicators

122 Indicators
updated

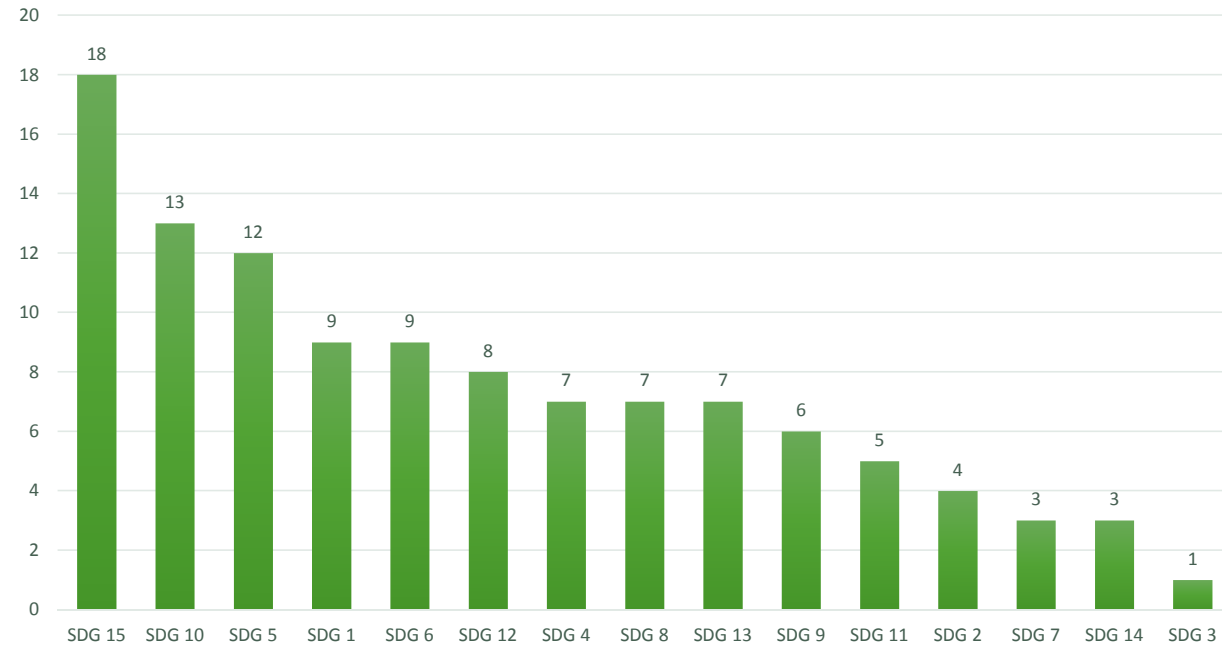


Finally
112 Indicators

Forestry sector's contribution in achieving SDGs - suggested indicators



Number of developed indicators according to SDGs



Forestry sector's contribution in achieving SDGs – Affiliated SDG indicators



Number of affiliated SDG indicators



Examples

Indicator	Related Goal	Related Target
Surface area (ha) selected according to conservation objectives in forests designated as nature conservation function	15	15.1
Proportion of forest areas to national land surface area (%)	15	15.1 - 15.2
Reforestation area (ha) except in steppe and <u>maquis</u> ecosystem areas	15	15.1 - 15.2
The proportion of rehabilitated mining areas (where mining activities stopped) within forest zones	15	15,1 / 15,2

Indicator	Related Goal	Related Target
Forest area per inhabitant (m ² / <u>kişi</u>) within urban zones	3	3,4 / 3,9 / 11,6

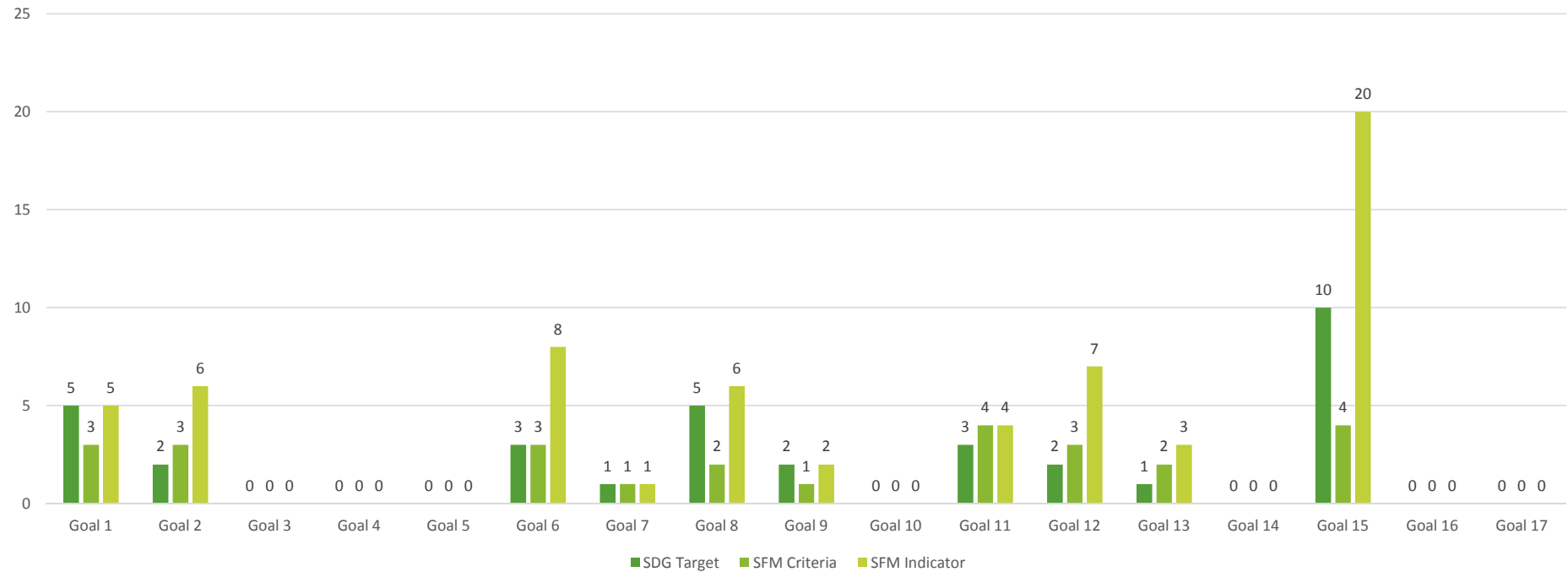


Update of SFM Criteria and indicators in Turkey

Time line	November 2017 – September 2018
Drivers	<ul style="list-style-type: none">▶ The need to address the gaps within the existing indicator sets▶ Update the system according to the built-up experience and developed data collection capacity▶ Forest Europe update process▶ Implementation of the Integrated Forest Management Project
Working groups	<ol style="list-style-type: none">1) Forest Resources and Carbon Stock2) Forests Health, Vitality and Integrity3) Production Functions of Forests4) Biological Diversity Function5) Protective Functions of Forests6) Socio-Economic Functions of Forests
Result	6 criteria and 40 indicators adapted to the Turkish context
Linkage with Forestry SDG Mapping	Assessment of the linkages between the SFM C&I and SDGs

SDG – SFM Criteria & Indicators

SDG - SFM C&I Linkage



Related SDGs



VI MFW
Mediterranean
Forest Week





VI MFW
Mediterranean
Forest Week

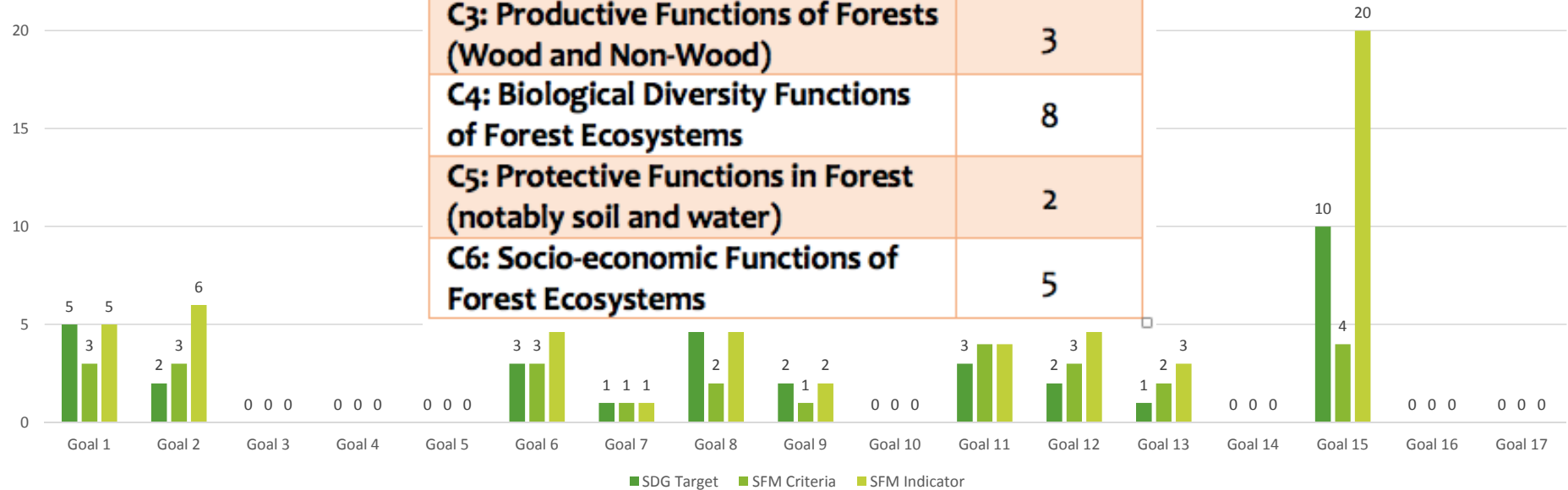
Potential SFM C&I providing data to monitor contribution to SDGs

C1: Forest resources and carbon stocks	C2: Forest Ecosystem Health and Vitality	C3: Productive Functions of Forests (Wood and Non-Wood)
I1.1 Forest area I1.2 Growing stock I1.3 Forest carbon I1.5 Forest areas managed through plans	G2.1 Forests affected by natural factors G2.2 Silvicultural activities G2.3 Human induced damages G2.4 Grazing damages G2.5 Authorisations and allotments G2.6 Air pollution and areas affected by climate change G2.7 Forest roads and facilities	G3.1 Increment and production G3.2 Non-wood products and services G3.3 Certified forests
C4: Biological Diversity Functions of Forest Ecosystems	C5: Protective Functions in Forest (notably soil and water)	C6: Socio-economic Functions of Forest Ecosystems
G4.1 Tree species diversity G4.2 Regeneration G4.3 Naturalness G4.4 Introduced tree species G4.5 Dead wood G4.6 Genetic resources G4.8 Threatened forest species G4.9 Protected areas	G5.2 Water protection forests G5.3 Natural disaster and infrastructure protection	G6.1 Contribution of forest sector to GDP G6.2 Forest products supply/demand/ balance G6.3 Employment G6.4 Financial power of forestry G6.6 Forest dependent communities G6.9 Research & development, Education and extension

SDG – SFM Criteria & Indicators

Criteria 6
Indicators 30

Criteria	Indicators
C1: Forest resources and carbon stocks	4
C2: Forest Ecosystem Health and Vitality	7
C3: Productive Functions of Forests (Wood and Non-Wood)	3
C4: Biological Diversity Functions of Forest Ecosystems	8
C5: Protective Functions in Forest (notably soil and water)	2
C6: Socio-economic Functions of Forest Ecosystems	5



The way forward

(Work in progress)

- ▶ A methodology created to map the SDGs within the MRV architecture
- ▶ A list of indicator to MRV the contribution of forest in achieving SDG at national level
- ▶ An updated set of SFM C&I at national scale (beyond forestry sector)
- ▶ An assessment of linkages between SFM C&I and SDGs

The way forward;

Discussion paper to move the dialogue with a wider audience

- ▶ At national level
- ▶ At international level



VI MFW
Mediterranean
Forest Week

Thank you

Emails

melike.hemmami@gmail.com

bahtiyar.kurt@undp.org

